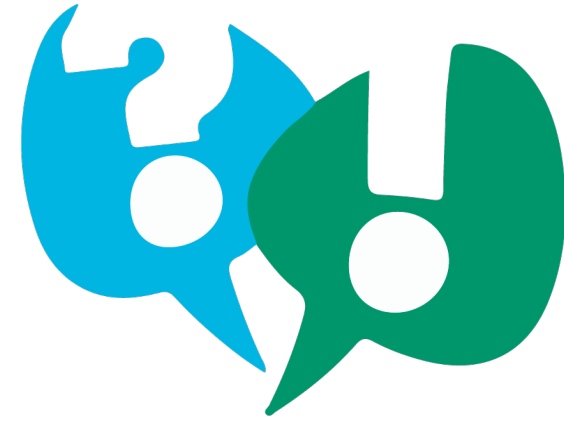




Smarter research. Deeper insights.

Capture – Collaborate – Analyse – Visualise





User friendly / do-it-yourself / all-in-one

Compliance with GDPR and national standards

Time and cost efficient

Collaboration

The research workflow...



Serious injuries ... vehicles involved

Please select Please select

Victims

Please select

- Radio horizontal
- Radio vertical**
- Dropdown
- Remove

Location information

Date of last follow up Date of last follow up

---- / -- / -- 2018 / 24 / 03

Augue neque gravida in fermentum et sollicitudin ac o
 eget. Tempor id eu nisl nunc mi ipsum faucibus vitae.

Date of birth Date o

---- / -- / --

Arcu felis bibendum ut tristique et egesta

Amet venenatis urna cursus eget. In ornare quam viver
 facilisis. Sit amet luctus venenatis lectus magna fringill
 duis at consectetur lorem donec massa sapien faucibus.

April 2021

Mon	Tue	Wed	Thu	Fri	Sat	Sun
25	26	27	28	29	30	1
2	3	4	5	6	7	8
9	10	11	12	13	14	15
16	17	18	19	20	21	22
23	24	25	26	27	28	29
30	31	1	2	3	4	5

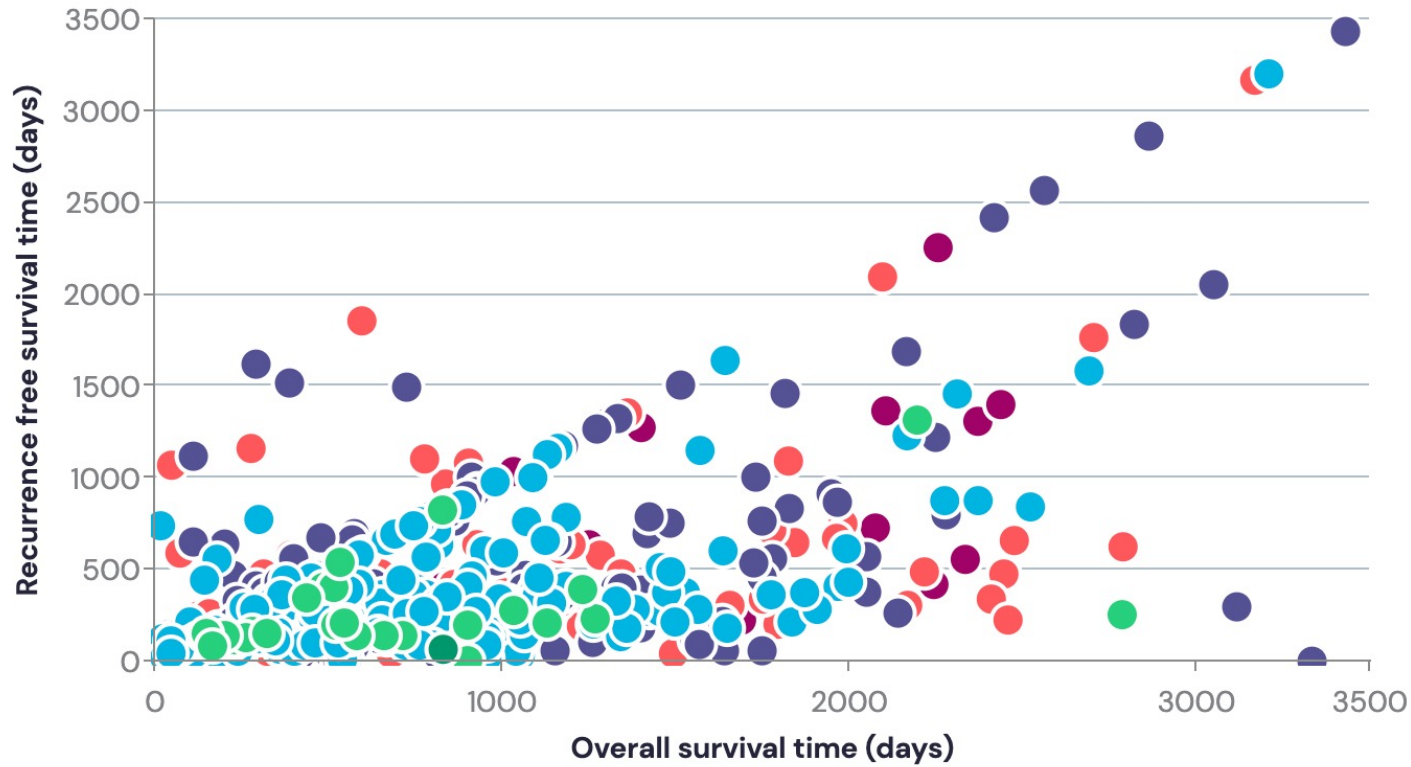


Correlations and linear regression



Risk score

- 0
- 1
- 2
- 3
- 4
- 5



Show chart legend

X-variable

Overall survival time (days) ▾

Y-variable

Recurrence free survival time (... ▾

Grouping

Risk score ▾

Pearson's Correlation Coefficient

Spearman's Rank Correlation Coefficient

Linear Regression



SPSS

Σ SigmaSTAT[®]


+tableau

 Viedoc

 REDCap

 SciPy

 Microsoft[®]
Excel

Σ SIGMAPLOT


MATLAB

Most solutions are too advanced & difficult to use
Multiple solutions needed to support the workflow

 GraphPad

 FileMaker

 aridhia DRE

 R

 Microsoft[®]
Access

Medinsight

 Power BI





Registry / database



Spreadsheet



Statistics



Graphs



Presentation / report



MATLAB





International research collaborations with Privacy Preserving Data Analysis





Registry / database



Spreadsheet



Statistics



Graphs



Presentation / report



Cloud – GDPR – Schrems II



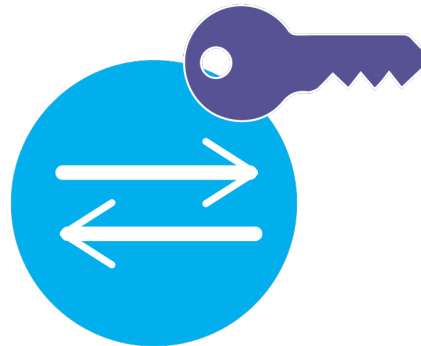


Confidential Computing

- data protection throughout the complete lifecycle



Data at rest



Data in transit



Data in use



Smarter research. Deeper insights.

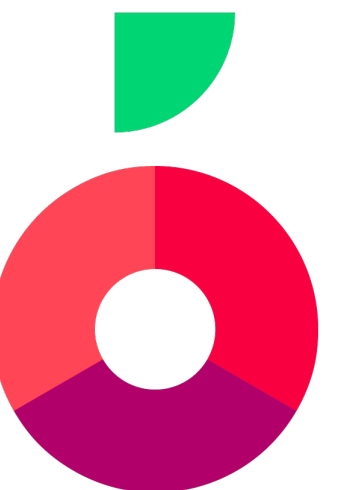
Capture – Collaborate – Analyse – Visualise



Standards in Ledidi Core

FHIR, SNOMED etc

Odd Christian Landmark



Web app

APIs

Metada
ta

Data
Entries

Project

Report

Business &
Data
Logic



Metadata

Data
Entries

Project

Report

Databases

Ledidi Core concepts

Variables



Variables



Add variables to your project

Variables are the essential part of the project, let's start by adding them manually or import your variable from a database file

Create new variable

or [Import data and variables](#)

New variable

General Details

Calculation rules

Variable name

Age

Description

No Description



Restricted

Hide variable from users without access to view restricted data.

Variable type

Entry



Data type

Number without decimals



Mandatory

Must be given a value when creating and updating an entry in the dataset.



Validation range

Cancel

Create variable



Project Design ▾

Analysis

Dataset

Documents

Collaborators

Search variables

+ New

Variables



Show All ▾

All Types ▾

Sort Variables Order ▾

Age

Number without decimals

Variables

Show All ▾

All Types ▾

Age
Number without decimals

A category variable
Category

Another category variable
Category

Some date
Date

Another date
Date

Variables

Show All ▾

All Types ▾

Age
Number without decimals

A category variable
Category

Another category variable
Category

 **Dates**
2 variables

Age

A category variable

No choices available [+ Add New Value](#)

Another category variable

No choices available [+ Add New Value](#)

^  Dates

Some date

Another date

Dataset



Show 10 entries ▾ 2 out of 2 entries



Age	A category variable	Another category variable	Dates		Last modified by	Owned by	Created date	Last modified
			Some date	Another date				
54	aaaa	bbbb	2021-12-10	2021-12-29	oddchristianpreprod	oddchristianpreprod	2021-12-01	2021-12-01
65	bbb	bbbb	2021-12-06	2021-12-17	oddchristianpreprod	oddchristianpreprod	2021-12-01	2021-12-01

```
“observationData”:  
  {  
    “age”:78,  
    “acategoryvariable”:"bbb",  
    “anothercategoryvariable”:"bbbb",  
    “somedate”:"2021-12-09",  
    “anotherdate”:"2021-12-05"  
  }
```

Ledidi Core concepts

Templates

Project Design ▲

Analysis

Dataset

Documents

Collaborators

Variables

Templates

Dependencies

Forms

Statuses

Number of animals

All Types ▼

A category variable

Category

Another category variable

Category

📁 Dates

2 variables

Templates

My templates

Other templates

Variables and Groups



▾ Age

▾ A category variable

▾ Another category variable

▾ 📁 Dates

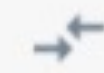
Templates

▾ 📄 Diagnosis template

15 variables ⋮

Dropzone

Description



Drag and drop variables or groups of variables here.

▾ STATE AT LAST FOLLOWUP

▾ SURVIVAL FROM SURGERY DAYS

▾ DATE OF LAST FOLLOWUPORDEATH 2

▾ STATE AT LAST FOLLOWUP 2

▾ DIAGNOSE 2



▾ SURVIVAL FROM SURGERY DAYS 2

Templates

My templates

Other templates

Variables and Groups




✓ Age

✓ A category variable

✓ Another category variable

✓  Dates

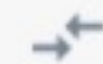
Templates

^  Diagnosis template

15 variables 

Dropzone

Description



Drag and drop variables or groups of variables here.

Update

Share



Import

Remove

✓ STATE AT LAST FOLLOWUP

✓ SURVIVAL FROM SURGERY DAYS

✓ DATE OF LAST FOLLOWUPORDEATH 2

✓ STATE AT LAST FOLLOWUP 2

✓ DIAGNOSE 2

✓ SURVIVAL FROM SURGERY DAYS 2

Standards as variable templates

FHIR example

Templates

My templates

Other templates

Variables and Groups



▾ Age

▾ A category variable

▾ Another category variable

▴ 📁 Dates

↳ ▾ Some date

↳ ▾ Another date

Templates

▾ 📄 Diagnosis template

15 variables

▾ 📄 FHIR Medication

4 variables

Templates

My templates

Other templates

Variables and Groups



▾ Age

▾ A category variable

▾ Another category variable

▾ 📁 Dates

↳ ▾ Some date

↳ ▾ Another date

Templates

▾ 📄 Diagnosis template

15 variables

▾ 📄 FHIR Medication

4 variables ⋮

Dropzone

Description



Drag and drop variables or groups of variables here.

▾ 📁 Medication

↳ ▾ manufacturer

↳ ▾ status

↳ ▾ code

↳ ▾ identifier

Templates

My templates

Other templates

Variables and Groups



- ▾ Age
- ▾ A category variable
- ▾ Another category variable
- ▾ Dates
 - ↳ ▾ Some date
 - ↳ ▾ Another date

Templates

▾ Diagnosis template
15 variables

▾ FHIR Medication
4 variables

Dropzone

Drag and drop variables or groups of variables here.

Description

▾ Medication

↳ ▾ manufacturer

↳ ▾ status

↳ ▾ code

↳ ▾ identifier

- Update
- Share >
- Import
- Remove



Template imported into project successfully!



Project Design ▾

Analysis

Dataset

Documents

+ New template

Templates

My templates

Other templates

Variables and Groups



Age

A category variable

Another category variable

Dates

Medication

Templates

Diagnosis template

15 variables

FHIR Medication

4 variables

Dropzone

Description



Drag and drop variables or groups of variables here.

Medication

manufacturer

status

code

identifier

Variables



Show All ▾

All Types ▾

Sort Variables Order ▾


Age
Number without decimals

A category variable
Category

Another category variable
Category

📁 Dates
2 variables


📁 Medication
4 variables



Edit Group ×

Group name

Sort **Variables Order** ▾

 **Medication**
4 variables

manufacturer
Text

status
Category

code
Category

identifier
Text

[Delete group](#)

Edit Variable

General DetailsCalculation rules

Variable name

Description

Restricted
Hide variable from users without access to view restricted data.

Variable type

Data type

Mandatory
Must be given a value when creating and updating an entry in the dataset.

Fixed values
Selectable values for this variable is limited to the values specified below. When off, new values can be added in the entry page.

261000 ×336001 ×363000 ×519005 ×585007 ×Use enter to add

Show as dropdown
When this one is checked, the categories are selectable in a dropdown, instead of radio buttons.

[Delete variable](#)

Sort **Variables Order** ▾

Medication
4 variables

Edit Group

Group name
Medication

manufacturer
Text

status
Category

code
Category

identifier
Text

Delete group

Edit Variable

General Details Calculation rules

Variable name: status

Description: No Description

Restricted
Hide variable from users without access to view restricted data.

Variable type: Entry

Data type: Category

Mandatory
Must be given a value when creating and updating an entry in the dataset.

Fixed values
Selectable values for this variable is limited to the values specified below. When off, new values can be added in the entry page.

active × inactive × entered-in-error × Use enter to add

Show as dropdown
When this one is checked, the categories are selectable in a dropdown, instead of radio buttons.

Delete variable Cancel Update Variable

```
“observationData”:  
  {  
    “age”:78,  
    “acategoryvariable”:"bbb",  
    “anothercategoryvariable”:"bbbb",  
    “somedate”:"2021-12-09",  
    “anotherdate”:"2021-12-05",  
    “medication”: {  
      “manufacturer”:"ABCDEFabcdef",  
      “status”:"active",  
      “code”:"336001",  
      “identifier”:" 24wg42534t234"  
    }  
  }  
}
```

Roadmap - 2022

- Separate set of templates offered by Ledidi - standards
 - FHIR variable set template
 - SNOMED category variable templates
- API customization
- Standards-based templates also within API customisation
 - Automatically taking advantage of adaptations through profiles, extensions etc
- Maybe
 - Wizards for using the right part of the standard in the right way